

Available  
**IMMEDIATELY**

**1,825 sq. ft. Office Space for Lease**



## **4043 Carling Avenue – Suite LL8**

### **Property Features**

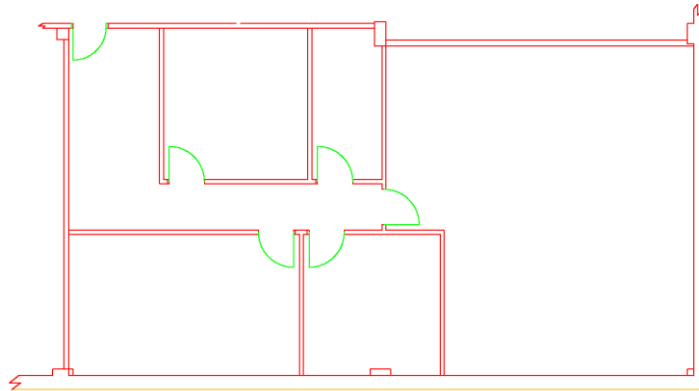
- Ample on-site parking
- Visitor's and handicap parking area
- Elevator in building
- Easy access to Queensway from March Road
- Common showers
- Main electrical – 600 V / 600 A / 3 phase

### **Suite Features**

- Contiguous with LL-6 (6,574 s.f. and LL-12 (488 sq. ft.) for a total of 8,887 sq. ft.
- Closed offices and open office area
- Reception, boardroom
- Close to all amenities and public transit
- Will customize to suit



## Floor Plan



4043 CARLING AVENUE, SUITE LL-8  
1,825 SQ. FT  
Contiguous with suite LL-6 (6,574 s.f.) and Suite LL-12  
for total square footage of 8,887 sq. ft.

