

Available  
**IMMEDIATELY**

**6,574 sq. ft. Office Space for Lease**



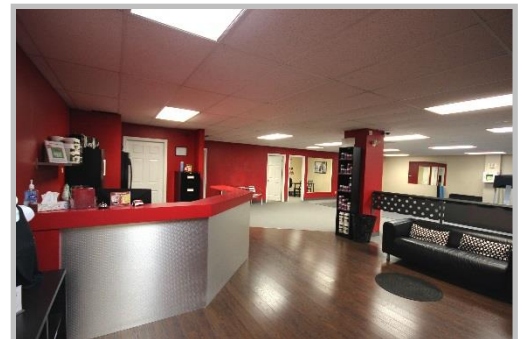
## 4043 Carling Avenue – Suite LL-6

### Property Features

- Ample on-site parking
- Visitor's and handicap parking area
- Elevator in building
- Easy access to Queensway via March Road
- Common showers
- Main electrical – 600 V / 600 A / 3 phase

### Suite Features

- Contiguous with LL-8 (1,825 s.f.) and LL-12 (488 s.f.) for total of 8,887 s.f.
- Mainly open space
- Reception + 2 enclosed offices
- Will subdivide / customize to suit
- Close to all amenities and public transit



## Floor Plan

