

Available
IMMEDIATELY

Up to 2,998 sq. ft. Office Space for Lease



1050 Morrison Drive – Second Floor

Property Features

- Renovated corridors and washrooms
- Ample on-site parking (4:1000)
- Visitor and handicap parking
- Handicap accessible
- Building access system
- Directory board & pylon signage
- Close to all amenities and public transit

Suite Features

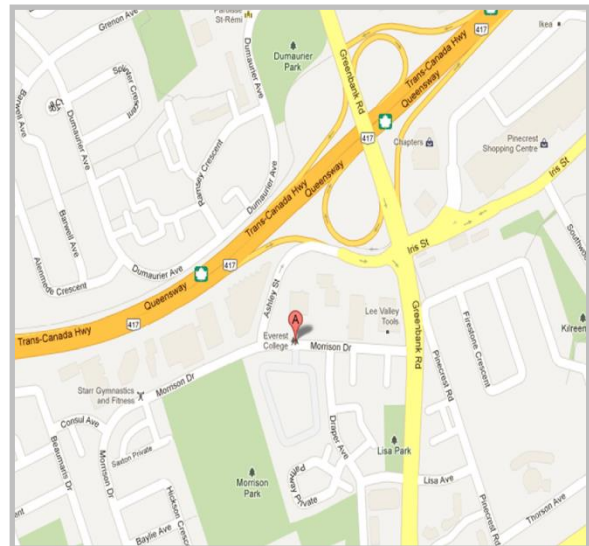
- Suite 203: 1,346 s.f.
- Suite 205: 1,652 s.f.
- Main electrical: 347/600 V, 1600 A / 3 phase
- Energy efficient building systems with LED lighting
- Will customize to suit



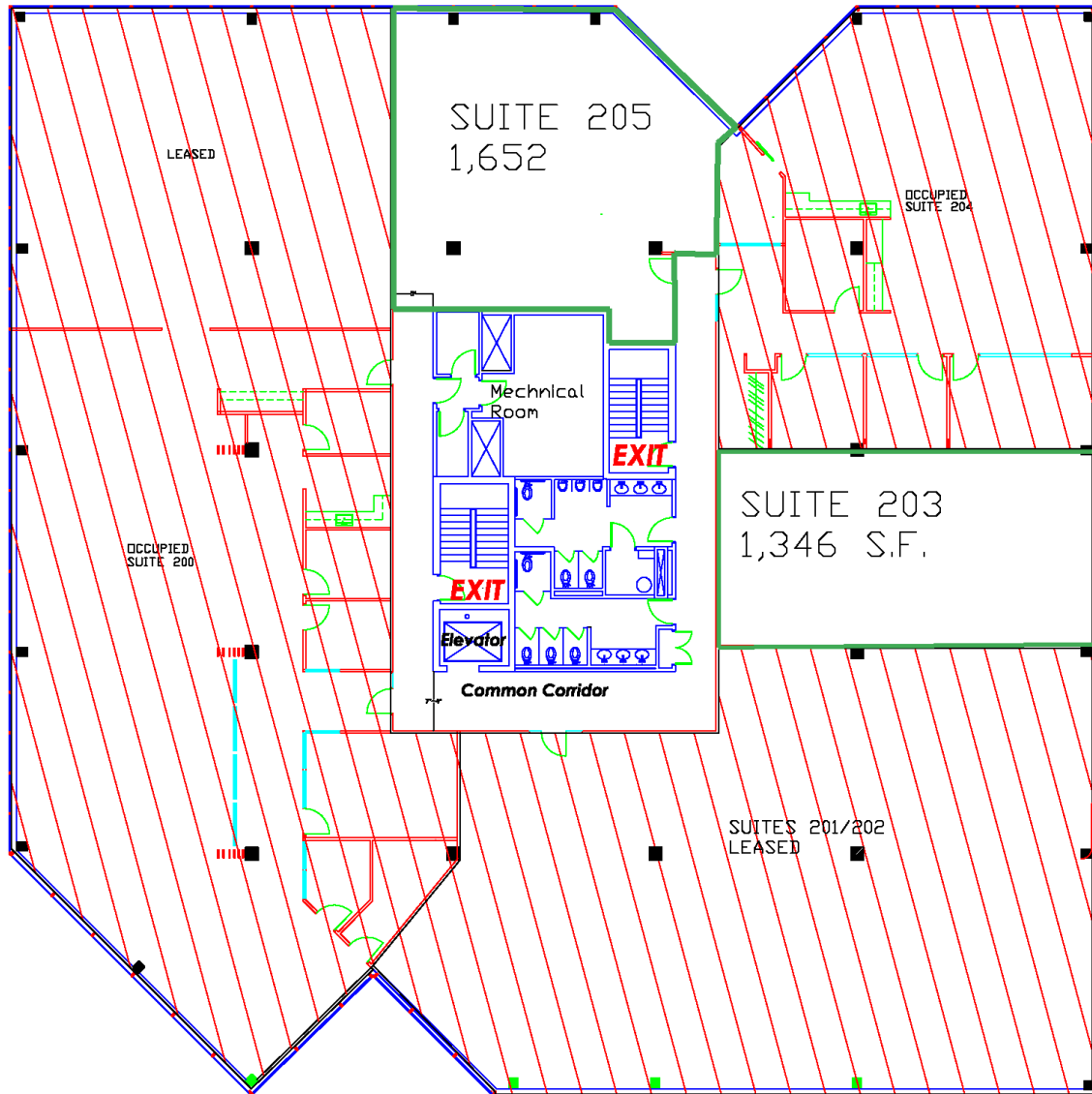
SUITES 201 – 203



SUITE 205



Floor Plan



1050 Morrison Drive, Ottawa
Second Floor